



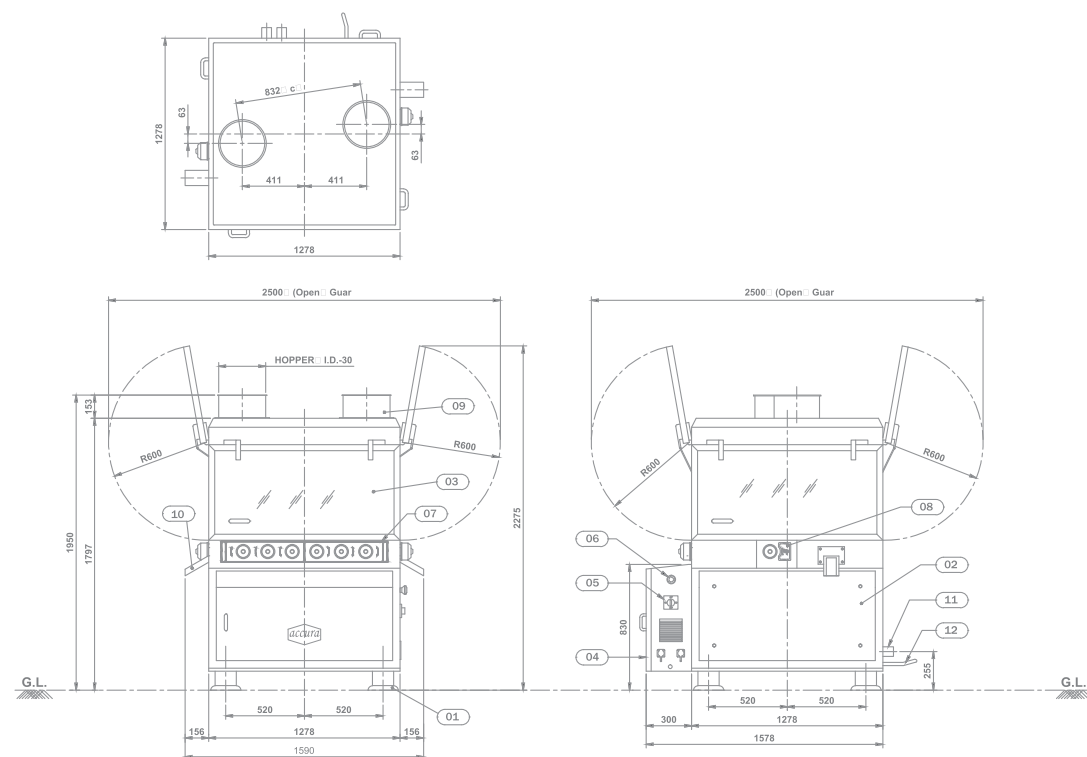
# accura PRESS IV

(WITH PRE COMPRESSION)  
DOUBLE SIDED HIGH SPEED ROTARY TABLET PRESS  
45 Stn. 'D', 61 Stn. 'B', 75 Stn. 'BB'  
25 Stn. Slugging Type (For veterinary Tablets) (40mm dia)  
35 Stn. Slugging Type (For veterinary Tablets) (30mm dia)

TECHNICAL SPECIFICATIONS			SLUGGING TYPE (For veterinary) DOUBLE ROTARY		
Machine Type	PRESS IV-45	PRESS IV - 61	PRESS IV - 75	PRESS IV - 25 - SLG	PRESS IV - 35 - SLG
Number of Stations	45	61	75	25	35
Type of Tooling	D	B	BB	SLUGGING	SLUGGING
Output-Tablets/Hr.	65,000 to	87,840 to	1,08,000 to	(Min.) 36,000 /	(Min.) 50,400 /
(Min./Max.)*	3,25,000	4,39,200	5,40,000	(Max.) 1,05,000	(Max.) 1,45,000
Max. Operating Pressure(Main)	10 Tons	6.5 Tons	6.5 Tons	12 Tons	12 Tons
Max. Operating Pressure(Pre)	1 Ton	1 Ton	1 Ton	01 Tons	01 Tons
Depth of fill	20 mm	17.4 mm	17.4 mm	30 mm	30 mm
Max. Tablet Dia	25 mm	16 mm	11.1 mm	40 mm	30 mm
Upper Punch enrtly	1.5 to 8 mm	1.5 to 8 mm	1.5 to 8 mm	1.5 to 8 mm	1.5 to 8 mm
Power Total	8.75 kw/11.7 HP	8.75 kw/11.7 HP	8.75 kw/11.7 HP	12.48 Kw / 16.7 HP	12.48 Kw / 16.7 HP
Power Main Electric Motor	11.25 kw /15 HP	11.25 kw /15 HP	11.25 kw /15 HP	11.25 kw /15 HP	11.25 kw /15 HP
Power (Feeder Motors 2 Nos.)	1440 RPM, 415 V.	1440 RPM, 415 V.	1440 RPM, 415 V.	960 RPM, 415 V.	960 RPM, 415 V.
	50 Hz, 3 Ph.	50 Hz, 3 Ph.	50 Hz, 3 Ph.	50 Hz, 3 Ph.	50 Hz, 3 Ph.
	0.19 KW / 0.25 HP	0.19 KW 0.25 HP	0.19 KW / 0.25 HP	0.19 KW / 0.25 HP	0.19 KW / 0.25 HP
Power (Feeder Motors 2 Nos.)	1440 RPM, 415 V.	1440 RPM, 415 V.	1440 RPM, 415 V.	1440 RPM, 415 V.	1440 RPM, 415 V.
	50 Hz, 3 Ph.	50 Hz, 3 Ph.	50 Hz, 3 Ph.	50 Hz, 3 Ph.	50 Hz, 3 Ph.
Overall Dimension (mm)	Guard Open.....	2500 (L) X 2500 (W) X 2275 (H).....		2570 (L) x 2800 (W) x 2330 (H)	2570 (L) x 2800 (W) x 2330 (H)
Overall Dimension (mm)	Guard Close.....	1500 (L) X 1580 (W) X 1900 (H).....		1500 (L) X 1580 (W) X 1900 (H)	1500 (L) X 1580 (W) X 1900 (H)
Net Weight (Approx)		3800 kg.....		3800 Kg.	3800 Kg.
Case Dimension (mm)		3100 (L) X 3200 (W) X 2450 (H).....		3100 (L) X 3200 (W) X 2450 (H)	3100 (L) X 3200 (W) X 2450 (H)
Gross Weight (Approx)		4150 kg.....		4150 kg	4150 kg

\* Depending upon material characteristic & available room atmosphere only.  
NOTE : DUE TO CONTINUES IMPROVEMENTS IN THE MACHINERIES, SPECIFICATION OF THE MACHINERIES IS SUBJECT TO CHANGE WITHOUT ANY PRIOR NOTICE.

Pre-pressure and Main pressure could be changed depending on the size of the compress and filling depth, powder or granulation. It is dependent on the physical specification of the used material for the compress.  
The above specification is the subject to change without prior notice for the technical development.  
It is Recommended not to use large depth of fill, minimum tablet thickness and maximum compression pressure for maximum performance consistently. Technical rights to change catalogues, specifications and features are reserved with the manufacturer. Actual output may vary against indicated output on the product under compression and RPM on lower side.



MANUFACTURED BY:



www.fluidpack.net

**Factory & Regd. Office:** I-4116, PHASE IV, G.I.D.C., VATVA, AHMEDABAD-382 445. (INDIA)  
**Phone:** +91-79-40237888, 2584 0777, 2584 0888, 2584 0999 **Fax:** +91-79-2584 0888.  
**Mobile:** Mr. M.M. Panchal : + 91- 098250 33305 Mr. Bipin Chawda : +91- 093275 78371  
**E-mail:** info@accuratabletpress.com, fluidpack@accuratabletpress.com, fluidpack83@gmail.com



# Fluidpack



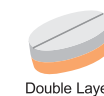
## accura PRESS IV (WITH PRE COMPRESSION)

DOUBLE SIDED HIGH SPEED ROTARY TABLET PRESS

45 Stn. 'D', 61 Stn. 'B', 75 Stn. 'BB'

25 Stn. Slugging Type (For veterinary Tablets) (40mm dia)

35 Stn. Slugging Type (For veterinary Tablets) (30mm dia)



MANUFACTURED BY:

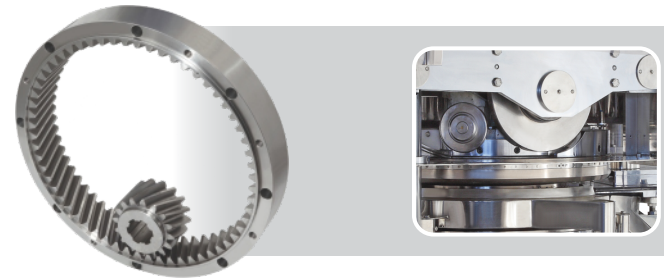


www.fluidpack.net



# accura PRESS IV

(WITH PRE COMPRESSION)  
DOUBLE SIDED HIGH SPEED ROTARY TABLET PRESS  
45 Stn. 'D', 61 Stn. 'B', 75 Stn. 'BB'  
25 Stn. Slugging Type (For veterinary Tablets) (40mm dia)  
35 Stn. Slugging Type (For veterinary Tablets) (30mm dia)



## SALIENT FEATURES

- It is a high speed double rotary tablet press for higher tablet output.
- Machine is having a square design with full consideration of cGMP standards.
- The machine is having PRE-COMPRESSION facility.
- The machine is having A.C. variable frequency drive for the main motor.
- The machine is having Electromagnetic clutch arrangements.
- All the tablet parameters can be fine tuned during the operation of the machine from outside the tableting zone, with front controls at outside of the machine, having SEIKO type dials.
- The machine is having A.C. variable frequency drive for force feeding motors, which enables operators to synchronize machine's speed & feed both.
- The machine having Motorized Hydraulic Powerpack for pressure loading and overload release.
- The machine is having Helical gear ring & pinion gear, to drive the turret.
- All upper Guards of transparent acrylic material with interlock switches for safety.
- Lower Guards of polished Stainless Steel SS 304.
- The machine is having excellent BOTTOM DRIVEN FORCE FEEDING SYSTEM for material feeding.
- The machine is having three piece turret with SS-316 middle plate.
- Electro less nickel plating is provided to the turret.
- Two layer attachment can also be provided, (Optionally).
- PLC with color MMI touch screen (Optionally).



## With Auto Force Rejection Through Compaction Force

- With load cell at Main Compression for Pressure measurement.
- With auto sampling based on, either time or revolution of punch no.
- With auto rejection of any single tablet out of prescribed compaction force limit.
- SCADA with industrial PC. having 15" colour touch screen (21 CFR part 11 compliance)
- With graphical as well as numeric representation of each individual punch force.

