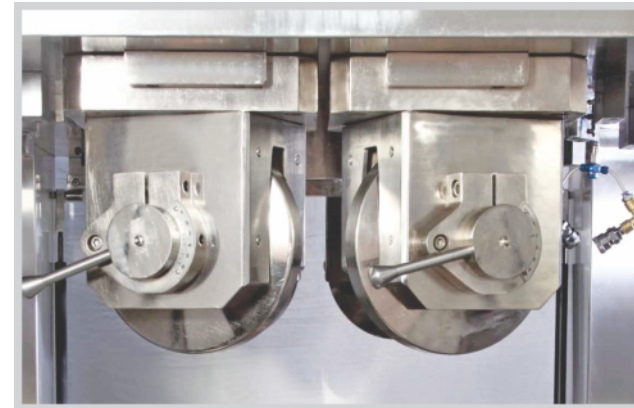


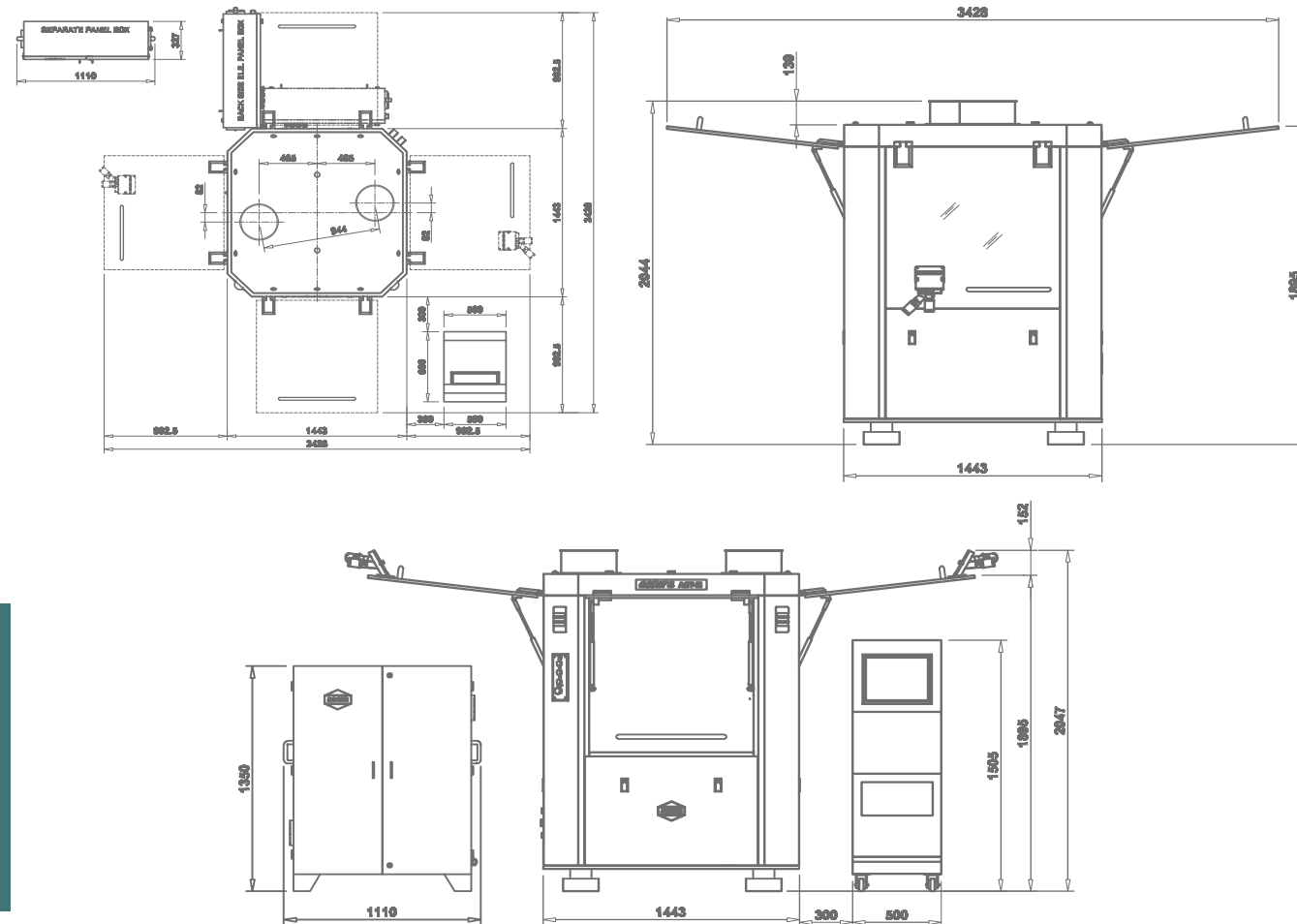


**accura**  
**ACT-III** | HIGH SPEED DOUBLE  
ROTARY TABLET PRESS

51 STN "D" Tooling / 65 STN "B" Tooling / 81 STN "BB" Tooling  
Maximum Output- 7,77,600 Tablets/Hour  
WITH EXCHANGEABLE TURRET (WITH CFC AND AWC)  
With pre compression of 10 tons. & main compression of 10 tons.



**ACT-III G.A.DRAWING**



MANUFACTURED BY:



**Factory & Regd. Office:** I-4116, PHASE IV, G.I.D.C., VATVA, AHMEDABAD-382 445. (INDIA)  
**Phone:** +91-79-40237888, 2584 0777, 2584 0888, 2584 0999 **Fax:** +91-79-2584 0888.  
**Mobile:** Mr. M.M. Panchal : + 91- 098250 33305 Mr. Bipin Chawda : +91- 093275 78371  
**E-mail:** info@accuratabletpress.com, fluidpack@accuratabletpress.com, fluidpack83@gmail.com



# Fluidpack



**accura**  
**ACT-III** | HIGH SPEED DOUBLE  
ROTARY TABLET PRESS

51 STN "D" Tooling / 65 STN "B" Tooling / 81 STN "BB" Tooling  
Maximum Output- 7,77,600 Tablets/Hour  
WITH EXCHANGEABLE TURRET (WITH CFC AND AWC)  
With pre compression of 10 tons. & main compression of 10 tons.



MANUFACTURED BY:





## FLUIDPACK, MANUFACTURERS AND EXPORTERS OF TABLETING MACHINES



### COMPANY PROFILE

We, "FLUIDPACK" are leading Tableting Machines Manufactures & Exporters in INDIA . Our Machines are having "ACCURA" brand.

We pledge to provide Accurate, Innovative & Cost effective tableting machines within committed time Schedules. We have achieved Market leadership and global success by offering creative and unconventional solutions to complex and challenging Projects.

We have a well engineered and equipped factory & people at Vatva Ahmedabad, (INDIA) and having all basic manufacturing facilities.

Our all machines are having cGMP compliance.

Our machines are also available with Interchangeable Turret, AWC, PLC & MMI color touch screen.

Highest out put of 7,77,600 tablet per hour can be achieved from our latest ACT III model 81 Stn. "BB" tooling tablet press.

Fluidpack have a presence in international market in almost 55 countries, including Europe & USA.

Fluidpack have expertise in tableting machines & have a large range of tableting machines suitable to almost all type of requirements.

The company is having excellent service & spares supply records.



### accura ACT-III

HIGH SPEED DOUBLE  
ROTARY TABLET PRESS

51 STN "D" Tooling / 65 STN "B" Tooling / 81 STN "BB" Tooling  
Maximum Output- 7,77,600 Tablets/Hour  
WITH EXCHANGEABLE TURRET (WITH CFC AND AWC)  
With pre compression of 10 tons. & main compression of 10 tons.

ALL MODELS AVAILABLE WITH CFC & AWC



CFC / AWC - (AUTO WEIGHT CONTROL)

- The range of AWC is divided such as control, reject and data store.
- Graphical appearance of the value of pre & main pressure.
- Display of figure and graph both for the value of pressure on each individual punch.
- Indication / Display, of any no. of the selected punch & the respective value of pressure applied on it.
- Filling depth can be adjusted, if the amount of filled powder is exceeded or shortened beyond preset value.
- The faulty tablet will be rejected automatically.
- All data like production, rejection samples taken. Batch time segment etc. is recorded.
- Discharge chute with three compartments like initial reject, auto reject & sampling gate.

TURRET CHANGE / EXCHANGE

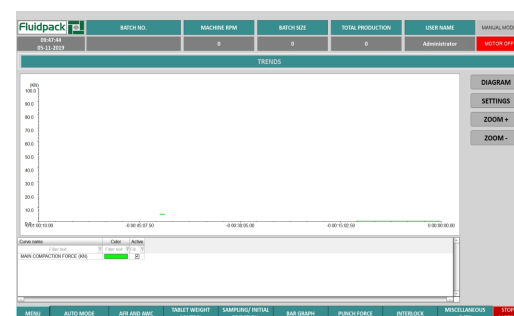
Looking to the increasing demand from pharma industries, for this type of mechanism, Fluidpack's ACCURA ACT-III double rotary Tableting Machine is manufactured / Crafted with great precision and with easy & specially designed turret lifting & lowering device, It can be operated through the hydraulic device. Turret is lifted up & down, from the top of it, by connecting it with a cantilevered, lifting liner mechanism. Turret, then after, can be unloaded on specially designed trolley. Another Turret can be immediately replaced by this mechanism on the machine with a very small time segment.

EXCHANGEABLE TURRET (AN ACCURA ADVANTAGE)



**accura**  
**ACT-III** | HIGH SPEED DOUBLE  
ROTARY TABLET PRESS

51 STN "D" Tooling / 65 STN "B" Tooling / 81 STN "BB" Tooling  
Maximum Output- 7,77,600 Tablets/Hour  
WITH EXCHANGEABLE TURRET (WITH CFC AND AWC)  
With pre compression of 10 tons. & main compression of 10 tons.

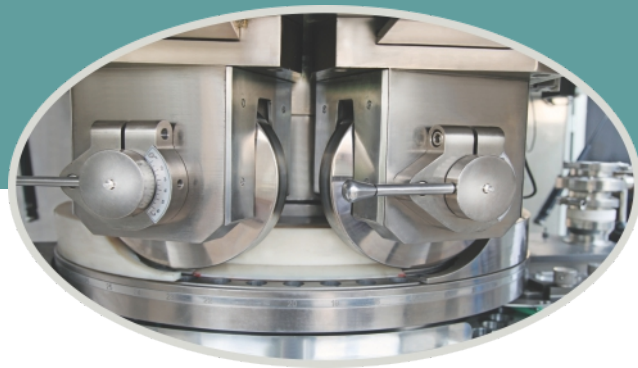




accura  
**ACT-III** | HIGH SPEED DOUBLE  
ROTARY TABLET PRESS

51 STN "D" Tooling / 65 STN "B" Tooling / 81 STN "BB" Tooling  
Maximum Output- 7,77,600 Tablets/Hour  
WITH EXCHANGEABLE TURRET (WITH CFC AND AWC)  
With pre compression of 10 tons. & main compression of 10 tons.

THE MACHINE IS HAVING FOLLOWING  
MAJOR SALIENT FEATURES



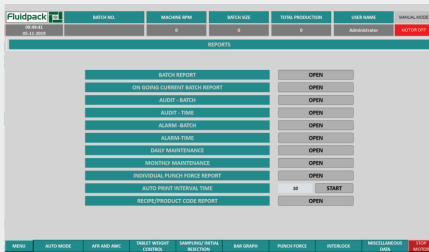
- DOUBLE ROTARY TABLET PRESS WITH EXCHANGEABLE TURRET.
- In compliance with cGMP & having center shaft driven turret thru heavy duty oil immersed reduction gear box.
- With Motorized pre compression of 10 Tons. (100 KN)
- With Motorized main compression of 10 Tons. (100 KN)
- With Motorized dozer, for precise depth of fill adjustment.
- With Motorized Force Feeder Having Zero Clearance Feeder Frame.
- With Load cell at Pre Compression for Pressure measurement.
- With Load cell at Main Compression for Pressure measurement.
- With load cells for lower punch tight detection.
- With CFC & Auto weight control (AWC).
- With Auto sampling based on, either time or revolution or Punch no.
- With auto rejection, of any single tablet, out of prescribed compaction force limit.
- With SCADA with industrial PC. having 15" colour touch Panel (21 CFR part 11 compliance.)
- Machine is Four sides open with Acrylic upper Guards.
- With Inter lock switches to all upper Guards
- Lower guards of polished stainless steel.
- With AC Variable Drive & Electro magnetic clutch.
- With Sliding Type Pre & Main upper pressure roll assembly, & with upper punch penetration.
- With Sturdy Structure design. Vibration free and easy to operate at 80 RPM.
- With easy Turret change facility & Very less Turret change over time.
- With option for turret exchange having tooling 51-D or 65- B or 81 BB.
- Turret Lifting by External Hydraulic Trolley.
- Turret Resting on separate Trolley.
- Reduces the product change over time.
- 2 Layer attachment (Optional).
- Additional turret assembly. (Optional).
- No more cubical required. All three type of tablet compression. available on the same machine.
- Save cost of Multiple operators.
- Save cost of Multiple Spares.
- Saves cost of Multiple Cubicles.
- Reduce the tablet rejection by AWC.
- Provide accurate weight & tablet quality.
- Optimize various tab, Parameters like hardness thickness & weight
- Eliminates maximum human errors.



# Fluidpack

TYPE	ACT – III 51	ACT III 65	ACT – III 81
TYPE OF TOOLING	D (EU-D. IPT D)	B (EU-B. IPT B)	BB (EU-B. IPT BB)
OUTPUT – TABLET / HOUR	91,800/ 4,90,000	1,17,000 / 6,24,000	1,45,800 / 7,77,600
MAX OPERATION PRESSURE MAIN (KN)	100	100	100
MAX OPERATION PRE –PRESSURE TAMP (KN)	100	100	100
MAX TABLET DIAMETER ROUND (MM)	25	16	11
MAX. TABLET THICKNESS (MM)	8.5		
MAX DEPTH OF FILL (MM)	4.5 – 10 FOR "D" & "B" & "BB" Tooling		
	8.5 – 14 "D" & "B" & "BB" Tooling		
	12.5 – 20 SUITABLE FOR "D" Tooling		
UPPER PUNCH ENTRY MAIN (MM)	1 TO 6		
UPPER PUNCH ENTRY PRE- COMPRESSION (MM)	1 TO 6		
POWER – TOTAL (KW/HP)	12.5 KW / 17 HP		
MAIN ELE. MOTOR (KW/ HP)	11 KW / 15 HP X 1440 RPM		
PRE.PRESS ROLL SERVO MOTOR(KW/HP)	750 W X 3000 RPM SERVO		
MAIN PRESS ROLL SERVO MOTOR (KW/ HP)	750 W X 3000 RPM SERVO		
WEIGHT ADJ. SERVO MOTOR (KW/HP)	750 W X 3000 RPM SERVO		
FEEDER SERVO MOTOR (KW/HP)	0.37/0.50, 1440 RPM X 2 NOS = 0.74 / 1.0 KW/HP		
HOPPER CAPACITY	26 LTR		
OVERALL DIMENSIONS (CM)	180 L X 145 W X 204 H (WITH CLOSE GUARD) CM		
OVERALL DIMENSIONS (CM)	339 L X 339 W X 200 H (WITH OPEN GUARD) CM		
NET WEIGHT	6500 kgs		
GROSS WEIGHT	7000 kgs		
UTILITES	1). SUCTION :- 300 CFM		
	2). COMPRESSED AIR: 5KG /SQ.CM (5 BAR)		
	3). POWER SUPPLY :- 415 V 3 PHASE, 50 HZ		

\*Machine output mentioned are rated outputs and can vary depending on the product characteristics, Tablet dimension/shape/size, depth of fill, ambient conditions, operator skill and machine maintenance.  
NOTE : DUE TO CONTINUOUS IMPROVEMENTS IN THE MACHINERIES, SPECIFICATION OF THE MACHINERIES IS SUBJECT TO CHANGE WITHOUT ANY PRIOR NOTICE.  
Electrical Specifications can be customized, like 60 Hz etc. as per customer choice.



OPERATION THROUGH CONTROL PANEL (By IPC- Industrial pc)

- Having Castor Wheels, for easy movement
- IPC (Industrial P.C.) With 15" Colour Touch Screen
- Easy to operate by soft touch
- Visual indication on safety messages.
- The Batch data can be recorded automatically & down loaded.
- The information of product can be recorded & saved under a file name.
- 3 Way passwords system With a Screen having various sections, making scanning and impact of data, easily. The display and recorded data can be printed also.
- The after sales, PLC complaints can be carried out by internet, Separate
- E-Mail connection and can be carried out comfortably in the operation terminal.
- The data can be stored. Pen drive connectivity
- 21 CFR Part 11 Compliance

BENEFITS OF SCADA :

- 1) Report Generation in PDF
- 2) Use of unlimited storage of recipes
- 3) Connectivity to any type of Printer.
- 4) Graphical system representation
- 5) Real time trending
- 6) Alarm History.
- 7) Audit trail
- 8) Advanced security Level