



accura PRESS II

DOUBLE SIDED HIGH SPEED
ROTARY TABLET PRESS
37 Stn. 'D', 45 Stn. 'B',
55 Stn. 'BB', 61 Stn. 'BB'

PRODUCT SPECIFICATION: ACCURA PRESS-II MACHINE

TYPE	PRESS-II-37	PRESS-II-45	PRESS-II-55	PRESS-II-61
Number of Station	37	45	55	61
Type of tooling (As Per EU1)	D	B	BB	BB
Output-tablets/hour (Min / Max.)(Single Layer)	44,400 / 2,22,000	54,000 / 2,70,000	66,000 / 3,30,000	73,200 / 3,66,000
Output-tablets/hour (Min / Max.) (Bi-Layer)	22,200 / 66,600	27,000 / 81,000	33,000 / 99,000	36,600 / 1,09,800
Turret RPM (Min./Max.)(Single Layer)	10 / 50			
Turret RPM (Min./Max.)(Bi-Layer)	10 / 30			
Max. Operating Pressure-Main (kN)	100	65		
Max. Tablet Diameter (mm)	25	16	11	
Max. Tablet Thickness (mm)	8.5			
Max. Depth of fill (mm)	20.5mm	17.5mm		
Upper punch entry Main	1/8" To 5/16" (3.2 to 8mm)			
Main Electric Motor (kW/hp)	7.5 / 10 x 1440 RPM			
Hydraulic Power Pack Motor (kW/hp)	0.75 / 1.0 x 1440 RPM			
Feeder Electric Motor (kW/hp)	0.19/0.25 x 1440 RPM x 2 Nos. = 0.38 / 0.50 kW/hp			
Hopper Capacity	20 Litres			
Overall dimensions close guard-cm	140 W x 141 L x 189 H			
Overall dimension Open guard -cm	246 W x 236 L x 208 H			
Case dimensions - cm	175 W x 176 L x 220 H			
Net weight (kg)	2500 Kg.			
Gross weight(kg)	2835 Kg.			
Utilities :	1) Suction Air :-	300 CFM (Qty. - 01 for Single Layer)		
		300 CFM (Qty.- 02 for Bi Layer)		
	2) Power Supply :-	(a) 415 V, 3 Phase, 50 Hz		
		(b) 480 V, 3 Phase, 60 Hz		
		(c) 220 V, 3 Phase, 60 Hz		
	3) Power-Total (kw/hp) :-	8.63 kW / 11.50 hp		

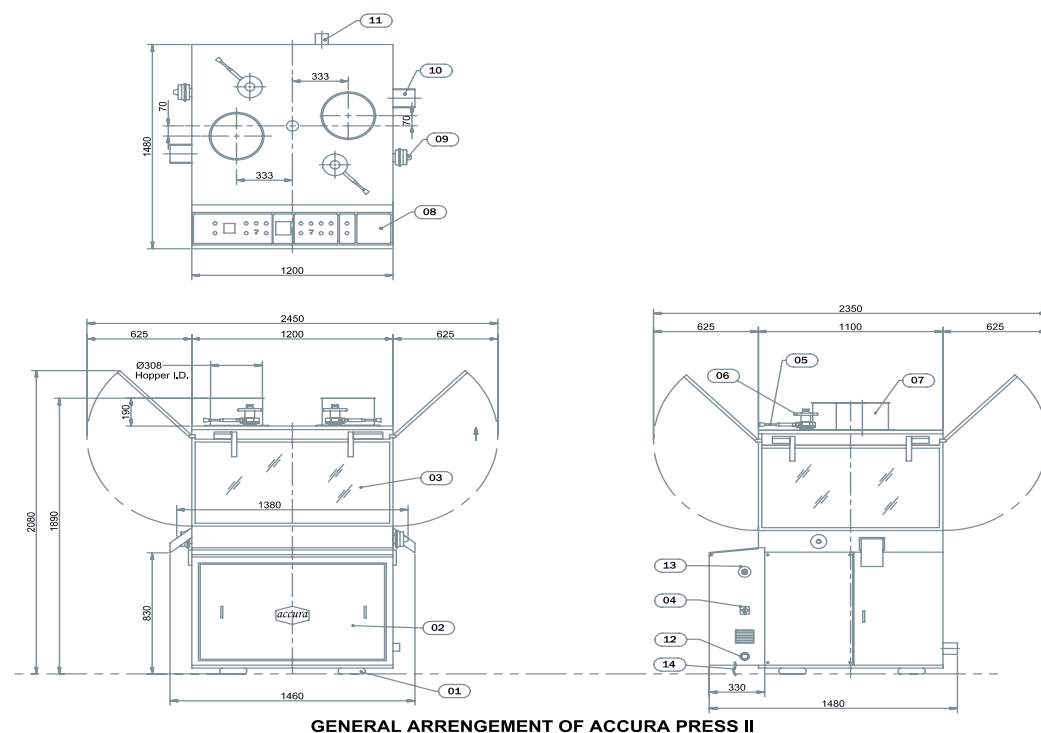
* Depending upon material characteristic & available room atmosphere only.

NOTE : DUE TO CONTINUOUS IMPROVEMENTS IN THE MACHINERIES, SPECIFICATION OF THE MACHINERIES IS SUBJECT TO CHANGE WITHOUT ANY PRIOR NOTICE.

Pre-pressure and Main pressure could be changed depending on the size of the compress and filling depth, powder or granulation. It is dependent on the physical specification of the used material for the compress.

The above specification is the subject to change without prior notice for the technical development.

It is Recommended not to use large depth of fill, minimum tablet thickness and maximum compression pressure for maximum performance consistently. Technical rights to change catalogues, specifications and features are reserved with the manufacturer. Actual output may vary against indicated output on the product under compression and RPM on lower side.



GENERAL ARRANGEMENT OF ACCURA PRESS II

MANUFACTURED BY:



www.fluidpack.net

Factory & Regd. Office: I-4116, PHASE IV, G.I.D.C., VATVA, AHMEDABAD-382 445. (INDIA)

Phone: +91-79-40237888, 2584 0777, 2584 0888, 2584 0999 Fax: +91-79-2584 0888.

Mobile: Mr. M.M. Panchal : + 91- 098250 33305 Mr. Bipin Chawda : +91- 093275 78371

E-mail: info@accurateabletpress.com, fluidpack@accurateabletpress.com, fluidpack83@gmail.com

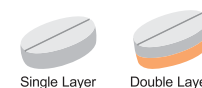


Fluidpack



accura PRESS II

DOUBLE SIDED HIGH SPEED ROTARY TABLET PRESS
37 Stn. 'D', 45 Stn. 'B', 55 Stn. 'BB', 61 Stn. 'BB'



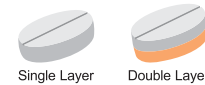
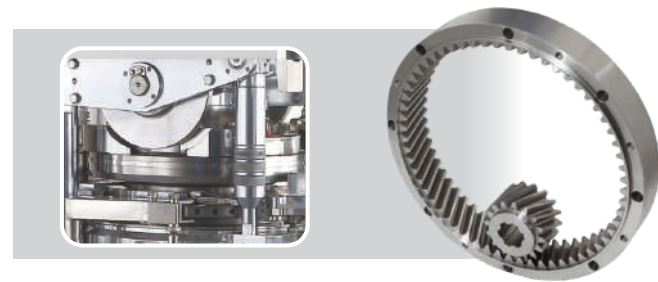
MANUFACTURED BY:



www.fluidpack.net

accura PRESS II

DOUBLE SIDED HIGH SPEED
ROTARY TABLET PRESS
37 Stn. 'D', 45 Stn. 'B',
55 Stn. 'BB', 61 Stn. 'BB'



MACHINE DESIGN

- High speed double rotary tablet press
- Square design with comply cGMP standards
- All contact parts made of SS 316L material
- 360° operational access
- All tablet parameters control from outside of tableting zone through Dial
- Plug & play design
- Bi-layer operation

COMPRESSION ZONE

- Double sided main compression roller - 100kN capacity
- SS 316L Double sided hopper with Powder controlling butterfly valve having - 24 Liters capacity
- Two Stage Force feeding system with zero clearance
- Butterfly valve to control flow of material
- 3 piece turret design - die table SS 316L material upper & lower piece in SGI material with electroless nickel plating.

LOWER BASE CABINET

- Main turret drive motor capacity of 10HP.
- Electromagnetic clutch system for smooth start of turret & improve life of motor and gearbox.
- Internal Helical ring with Pinion for turret rotation through high torque gearbox - Fluidpack Make.
- Hydraulic compaction force control system.
- Hydraulic cylinder withstand up to 100kN force.
- Auto lubrication system.
- Lower guard made of SS 304L Material.

OPERATING THROUGH HMI (Optional)

- High speed data transfer PLC for smooth operation
- 7" touch screen HMI for ease of operation



CFC CONTROL AFR SYSTEM (Optional)

- High speed data transfer PLC for smooth operation
- 15" touch screen Industrial PC for ease of operation
- Operating through SCADA
- Auto weight control based on compaction force
- Loadcell at Main compression
- Pneumatic system for tablet rejection & sampling
- 3way discharge chute (Good, Reject & Sample)
- Automatic single tablet rejection beyond force limit at higher speed
- Automatic Tablet initial rejection & Stop rejection
- Different types of sampling function
- Latest industrial windows operating system
- Individual punch force & Bar graph
- Printing Option (Audit, Alarm, Recipe, Batch Report, Compaction force etc)
- System line integration available

Also available with CFC / AFR

